

IP i+

IMPERIAL i+



Window and door systems with thermal insulation. The system is designed for use in residential and public buildings, and also allows designing modern window solutions in multiple variants.

IP i+

The system is designed for windows, doors and shop windows with high thermal insulation parameters.

A high thermal insulation power was achieved by applying special thermal inserts between thermal separators and around the glass pane.
Available options: IP, IP i, IP i+.

Large number of shapes in the system guarantees the obtained desired appearance and structural strength.

The option of installing windows in facade systems.

Glazing strips available in a rectangular and circular variant.

The shapes of profiles suitable for the installation of various peripheral hardware, including hidden hinges and PCV hardware.

A broad range of glazing allows using all types of single and double cavity, acoustic and anti-burglary glass panes.

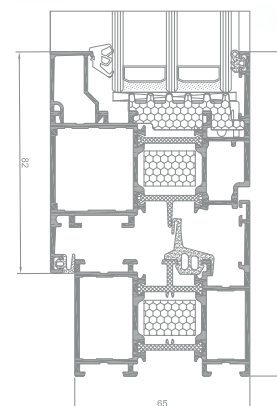
Profile drainage in two variants: traditional and hidden.

There is possibility of use Flyscreen system (Flyscreen – fly screens are a practical and an extremely functional protection against insects).

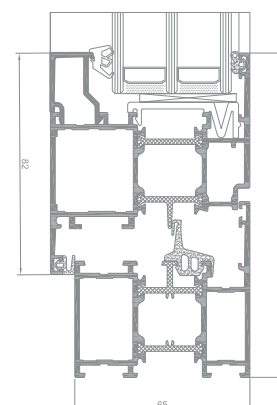
The option of bending profiles (detailed specification of profiles and detailed technical parameters of profile bending process are available in the customer area of the website www.aliplast.pl).

The system is designed for use in residential and public buildings, and also allows designing modern window solutions in multiple variants.

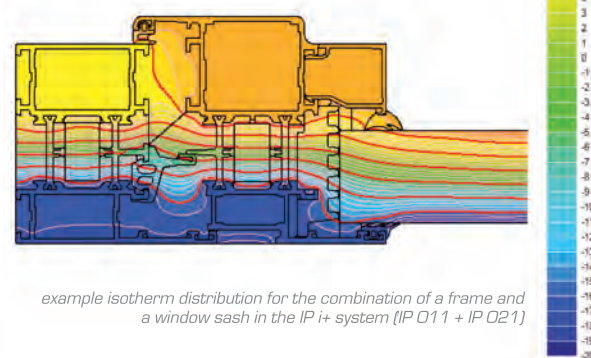
A wide range of colours available - RAL palette, structural colours, Aliplast Wood Colour Effect, bi-colour.



IP i+ window section



IP window section



example isotherm distribution for the combination of a frame and a window sash in the IP i+ system (IP O11 + IP Q21)

TECHNICAL SPECIFICATION

SYSTEM	MATERIAL	DEPTH OF FRAME	DEPTH OF LEAF	GLAZING RANGE	TYPE OF WINDOWS	TYPE OF DOORS
IP	aluminium / polyamid	65 mm	74 mm	4-51 mm	single and double doors, outside opening, inside opening	_____
IP i+	aluminium / polyamid	65 mm	74 mm	4-51 mm	single and double doors, outside opening, inside opening	_____

PERFORMANCE

SYSTEM	THERMAL INSULATION Uf *	AIR PERMEABILITY	WINDLOAD RESISTANCE	WATERTIGHTNESS
IP	Uf from 1,57 W/m ² K	Class 4; EN 12207	Class C4; EN 12210	Class E1350; EN 12208
IP i+	Uf from 1,28 W/m ² K	Class 4; EN 12207	Class C4; EN 12210	Class E1350; EN 12208

* Thermal insulation is dependent on a combination of profiles and thickness of the filling.